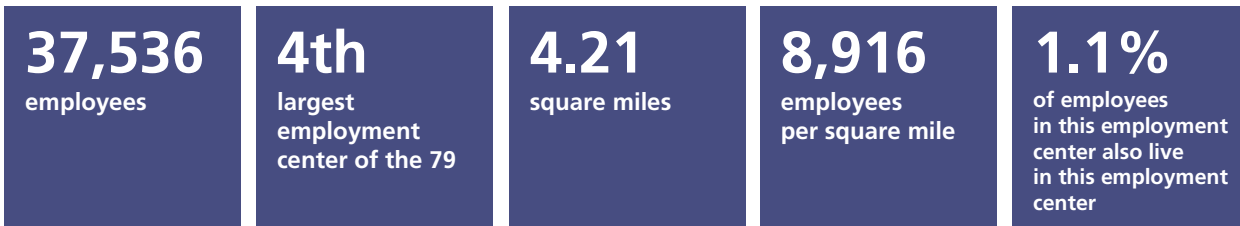


Mission Valley employment center

Tier 2 employment centers in the San Diego region¹: An analysis of where people live and work

Highlight 1

Characteristics of this employment center



Sources: SANDAG Employment Estimates, 2016; LEHD LODES OD, 7.3, 2015

Highlight 2

Industries in this employment center and the region overall

	Mission Valley employment center		Region	
	Number of jobs	Percentage/rank	Number of jobs	Percentage/rank
Health care and social assistance	5,885	16% (1)	199,700	13% (1)
Retail trade	4,984	13% (3)	156,612	10% (2)
Professional, scientific, technical	2,973	8% (5)	148,766	10% (3)
Food services	3,903	10% (4)	131,594	9% (4)
Manufacturing	115	<1% (20)	109,234	7% (5)
Administrative, support, waste services	5,688	15% (2)	91,519	6% (6)
Construction	818	2% (11)	83,498	5% (7)
Local government education	718	2% (13)	80,300	5% (8)
Other services	1,237	3% (8)	69,124	5% (9)
Finance and insurance	2,960	8% (6)	47,848	3% (10)
Wholesale trade	606	2% (15)	46,625	3% (11)
Arts, entertainment, recreation	304	1% (19)	45,639	3% (12)
Real estate, rental, leasing	1,061	3% (9)	38,582	3% (13)
Local government	0	0% (23)	37,429	2% (14)
Transportation and warehousing	685	2% (14)	36,183	2% (15)
Accommodation	2,471	7% (7)	33,094	2% (16)
Educational services	1,056	3% (10)	32,892	2% (17)
State government education	0	0% (24)	31,600	2% (18)
Information	763	2% (12)	26,262	2% (19)
Department of Defense	0	0% (25)	22,500	1% (20)
Management of companies/enterprises	380	1% (17)	21,500	1% (21)
Federal government	552	2% (16)	11,454	1% (22)
Farm	2	<1% (21)	9,000	1% (23)
Utilities	2	<1% (22)	7,208	<1% (24)
State government	373	1% (18)	7,037	<1% (25)
Mining and logging	0	0% (26)	300	<1% (26)
Total	37,536		1,525,500	

Source: SANDAG Employment Estimates, 2016

¹ This data summary was prepared by SANDAG and is part of an evolving analysis of where people live and work in the San Diego region. Tier 2 employment centers are those between 20,000 and 40,000 employees. For data notes, sources, and qualifications, please visit: sandag.org/employmentcenters. Suggested reference: SANDAG (2019, May). *Tier 2 employment centers in the San Diego region: Mission Valley employment center*. San Diego, CA: Author.

Highlight 3

Other statistics about the education level and income of employees in this employment center

22%

have Bachelor's degree or higher (24% region)

\$47,391

mean employee salary (\$55,801 region)

these jobs represent
2.5%
of the region's jobs

these incomes represent
2.4%
of regional labor income

Sources: SANDAG Employment Estimates, 2016; LEHD LODES OD, 7.3, 2015

Highlight 4

What mode of transportation these employment center employees use to get to work during peak period?



	Drive alone	Transit	Carpool	Bike	Walk
Mission Valley employment center	79%	5%	13%	1%	1%
Region	80%	4%	13%	2%	1%

Source: SANDAG Activity Based Model, 2016

Highlight 5

How far employees drive on average to get to this employment center during peak period and how long it takes them on average, by transportation mode

	Mission Valley employment center		Region	
	Mean number of miles	Mean length of time (Minutes)	Mean number of miles	Mean length of time (Minutes)
Vehicles	11.5	21.1	12.0	25.1
Transit	9.7	62.2	10.7	62.8
Bike	7.3	36.2	4.3	21.6
Walk	1.8	35.3	1.2	23.2

Note: Peak period includes 6:00 a.m. to 8:59 a.m. and 3:30 p.m. to 6:59 p.m.

Source: SANDAG Activity Based Model, 2016

Highlight 6

What jurisdictions these employment center employees travel from

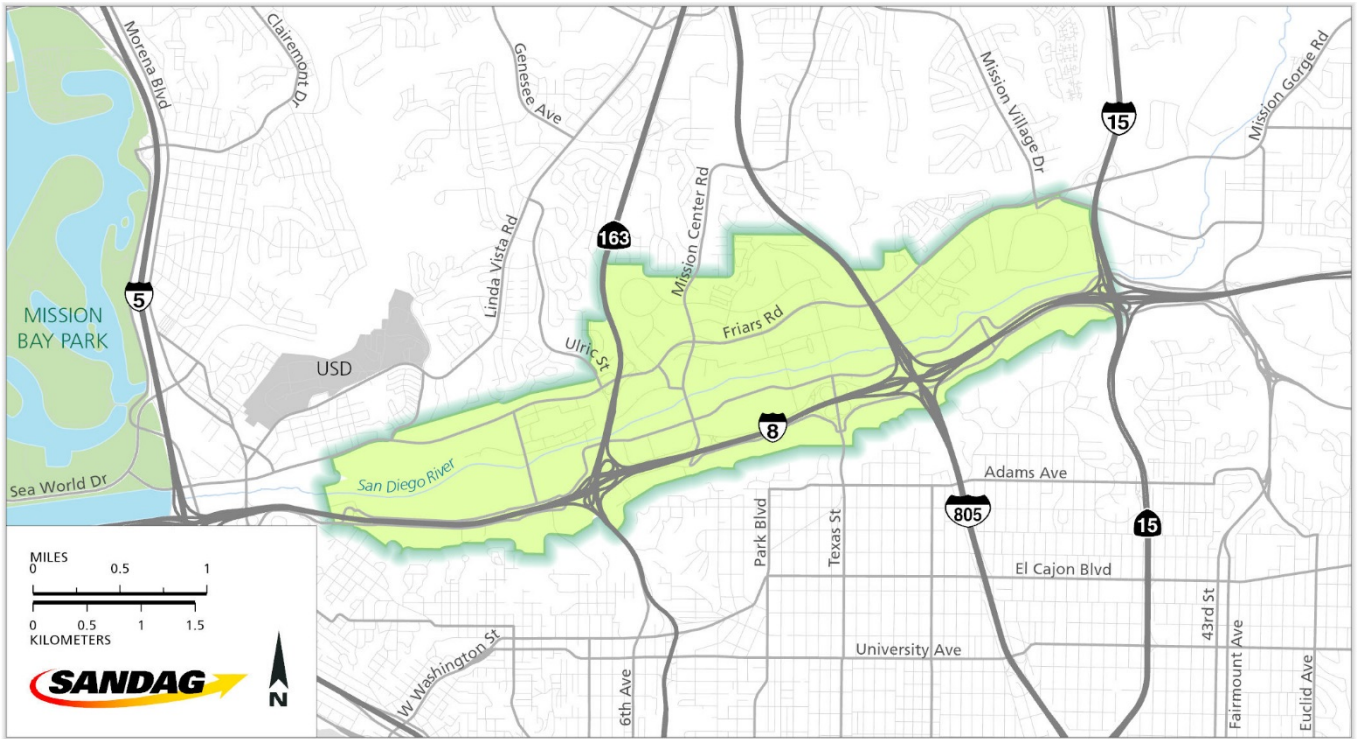
Jurisdiction	Number of workers in the employment center	Percent
San Diego	18,355	58%
Unincorporated	3,716	12%
Chula Vista	3,084	10%
El Cajon	1,053	3%
La Mesa	926	3%
Santee	801	3%
National City	675	2%
Oceanside	532	2%
Escondido	466	2%
Poway	398	1%
Lemon Grove	373	1%
Carlsbad	340	1%
Imperial Beach	289	1%
San Marcos	242	1%
Vista	235	1%
Encinitas	178	1%
Coronado	157	1%
Solana Beach	44	<1%
Del Mar	20	<1%
Total	31,884	

Note: The total number of employees shown here is lower than presented elsewhere because employees who travel from outside the region or have an unknown origin location are excluded and only primary jobs are included.

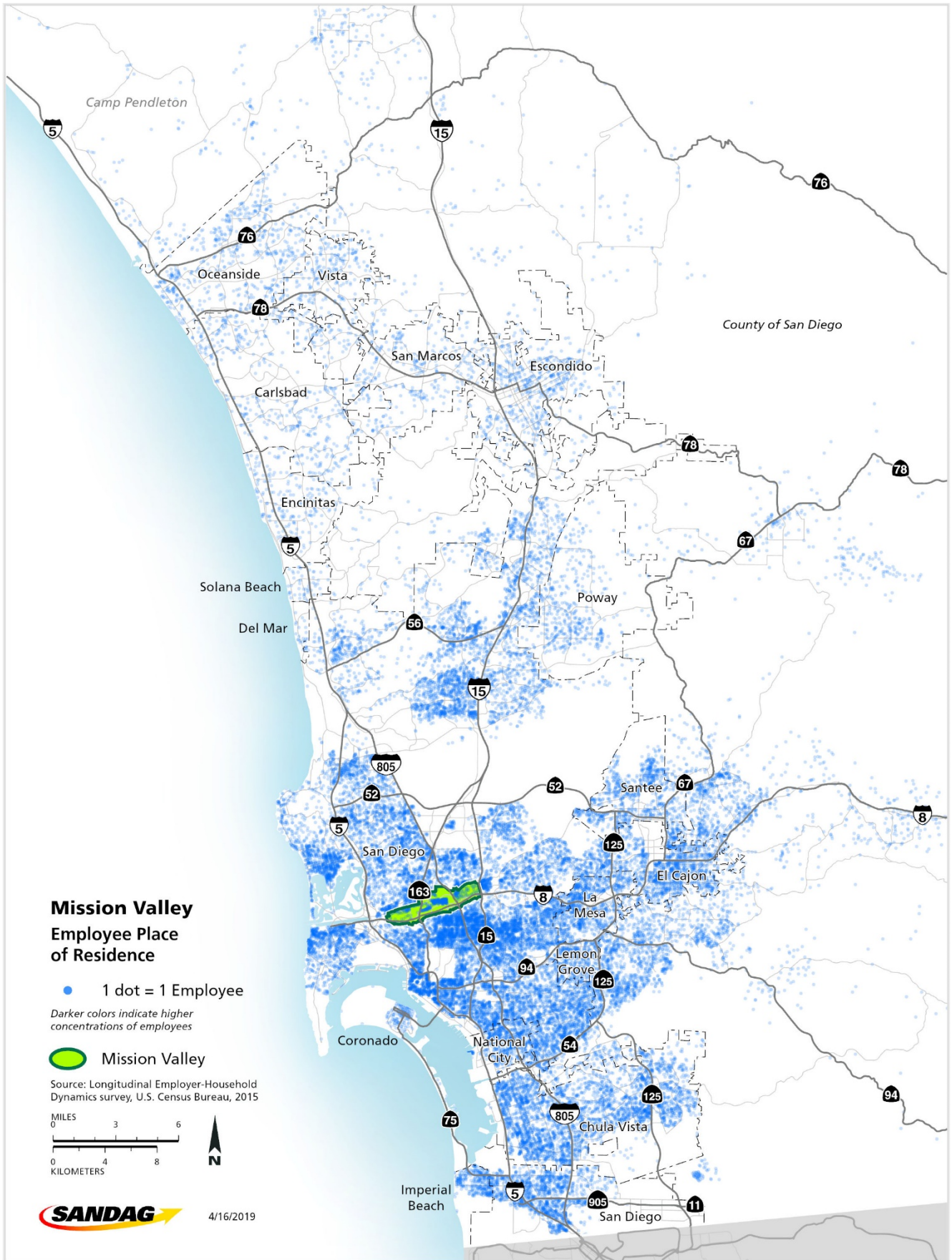
Source: SANDAG Employment Estimates, 2016; LEHD LODES OD, 7.3, 2015

Map 1

Mission Valley employment center



Where do Mission Valley employment center employees live?



How far employees in the Mission Valley employment center have to travel

